



PENNWEST

reserve

R

2-STORY

Table of Contents

Pg	Name	Model #	Size	Sq Ft
3	Cabinet Selections			
4	Crisfield	6P2001R	2836	1968
5	Redwood	6P2002R	2837/35	1968
6	Bethel	6P2003R	2836	1968
7	Harrington	6P2004R	2836	2008
8	Bennington	6P2005R	2840	2106
9	Portland	6P2006R	2844	2288
10	Pittsburgh	6P2007R	2850	2269
11	Rosedale	6P2008X	3236	2092

Pennwest Homes is a major producer of system-built modular homes in the northeastern United States. Well known for our innovative designs, superior construction and outstanding service and support, Pennwest also specializes in custom floor plans. Pennwest combines eye-catching curb appeal with a broad set of options to allow you to create a home uniquely your own.

Pennwest Homes is a division of The Commodore Corporation, a family-owned company with many years of experience building State Code Compliant (modular) homes.

Pennwest Reserve 2-Story homes are system-built by Pennwest Homes in a controlled environment and comply with state and local building codes.

The Pennwest Reserve 2-Story Collection offers flexibility and a selection of floor plans to meet varying family needs and budgets. The many available options enable you to customize and add personal touches to enhance the home of your dreams.



French Country Oak
Mission Flat Panel



Barnwood Oak
Mission Flat Panel



Warm Sienna
Mission Flat Panel



Hickory
Raised Panel



Shadow Grey
Mission Flat Panel



White
Mission Flat Panel



Precision Cut and Dadoed Construction Fastened and Hot Glued - Ensures a Long Lasting and Square Cabinet Box

3/4 Overlaid Cabinet Doors & Drawer - Limited Exposure of Cabinet Stiles

3/4" Thick Shelving with Finished Edges - Prevents Warping of Shelves

Base and Wall Cabinet Adjustable Shelving - Fit Your Lifestyle

3/4" Face Frames - Durable and Securely Holds Fasteners for Long Lasting Use

Pocket Screws - Ensure a Strong and Square Frame

Dove-Tail Constructed Drawers - Superior Drawer Strength

Undermount Soft Close Drawer Guides

Concealed and Recessed Hinges - Superior Door Strength

Recessed Toe Kick - Work at Counters with Ease

No Exposed Hanging Cleats- More Storage and Cleaner Look

KCMA Testing

- Overhead Cabinets Rated to 500 pound Capacity
- Drawers Opened 28,000 Times with Weight
- Cabinet Doors Opened 25,000 Times
- Extreme Testing of Cabinet Finish



Evermore Custom Cabinets endure a series of rigorous tests, measuring structural integrity. Cabinet doors, drawers and even the finish are tested before earning the KCMA Cabinet Certification.

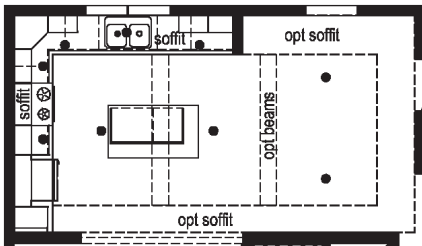
Visit www.KCMA.org
for more information

Crisfield

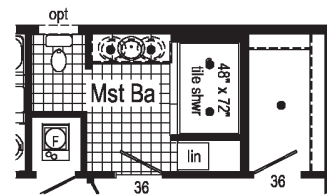
6P2001R

28x36 Approx. 1968 sq ft

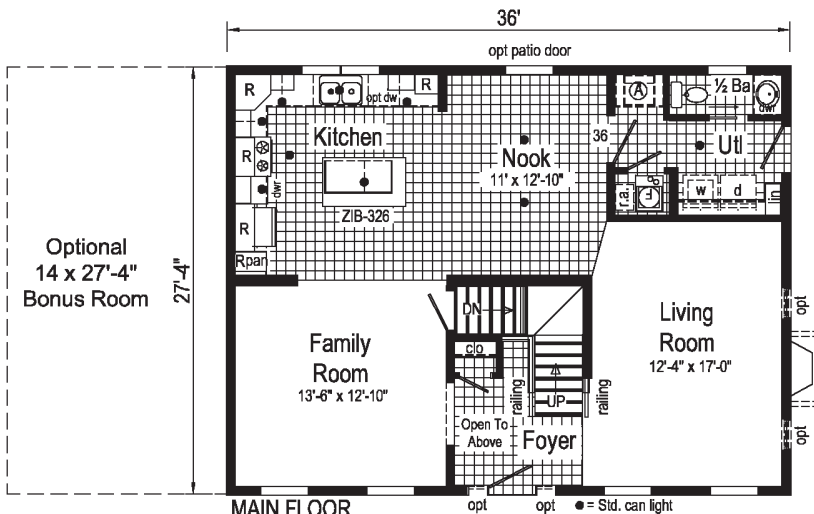
Some features shown may be optional or added on-site by others.



Kitchen with Soffit
Opt. Kitchen & Nook Drywall Soffit and Beams.



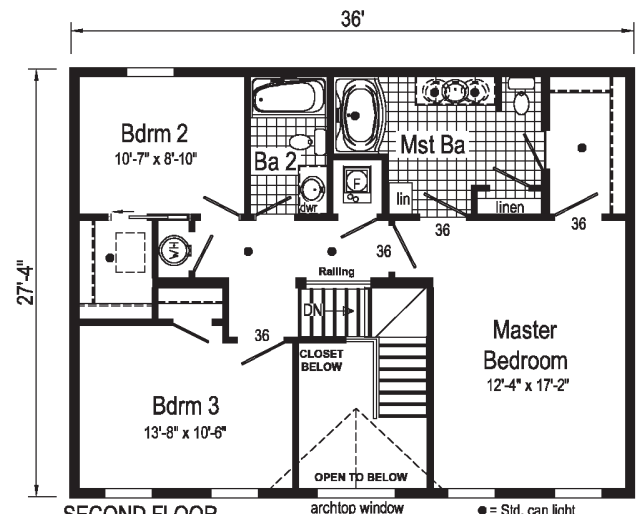
**Optional
4'x6' Walk-In
Tile Shower**



MAIN FLOOR

Ⓐ = Std frz spc, opt utl sink or bench.

● = Std. can light
R = Std. 30/36 staggered overhead



SECOND FLOOR

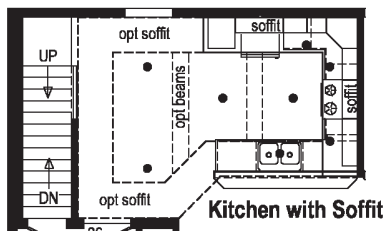
● = Std. can light

Redwood

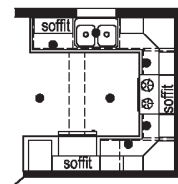
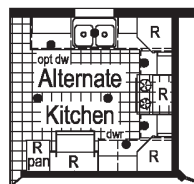
6P2002R

28x37/35 Approx. 1968 sq ft

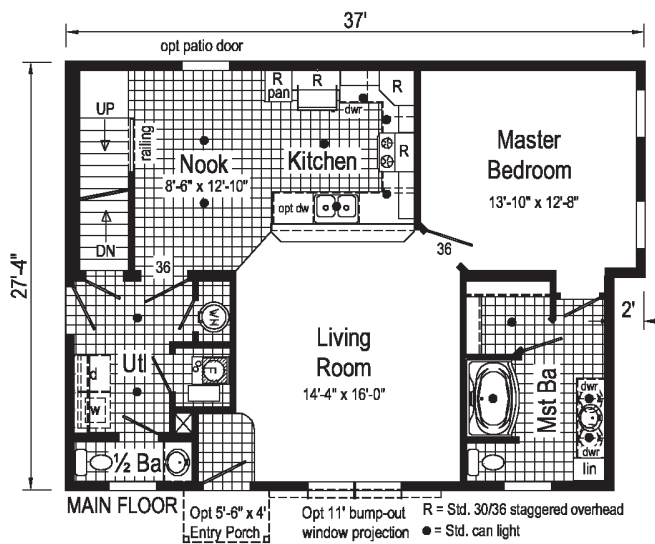
Some features shown may be optional or added on-site by others.



Kitchen with Soffit
Opt. Kitchen & Nook
Drywall Soffit and Beams.



Alternate Kitchen with Soffit

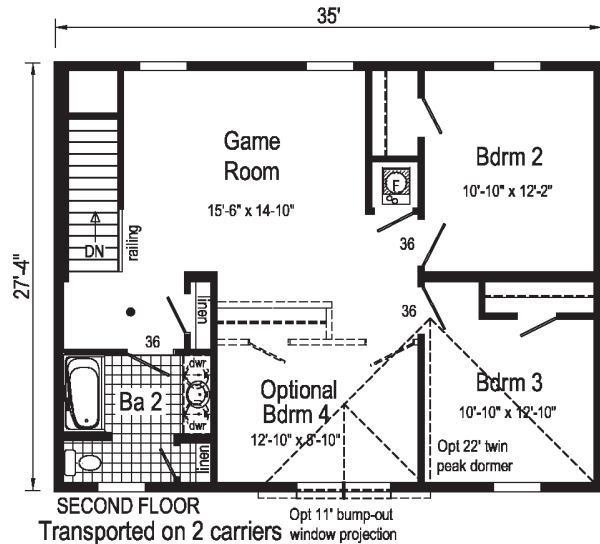


MAIN FLOOR

Opt 5'-6" x 4' Entry Porch

Opt 11' bump-out window projection

R = Std. 30/36 staggered overhead
● = Std. can light



SECOND FLOOR

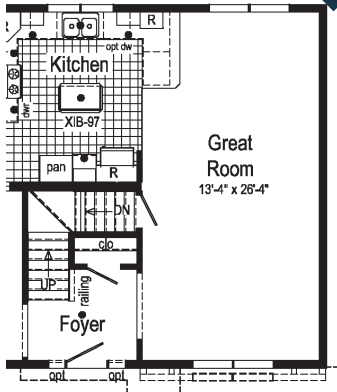
Transported on 2 carriers

Bethel

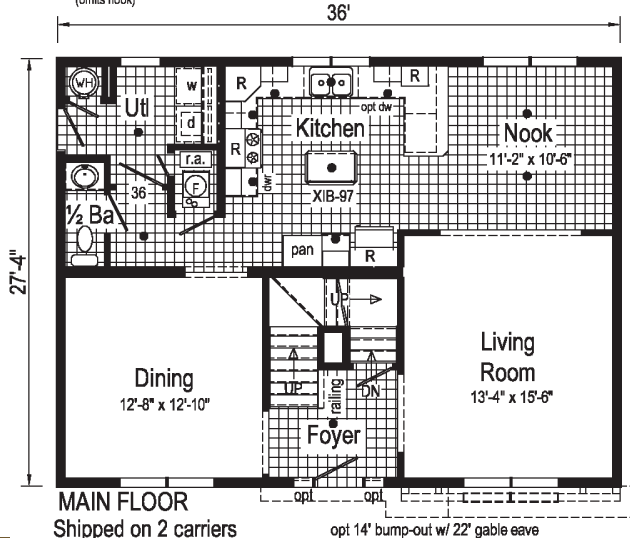
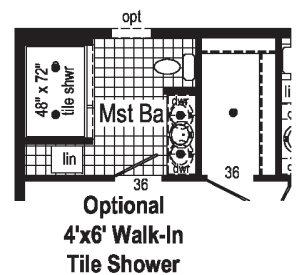
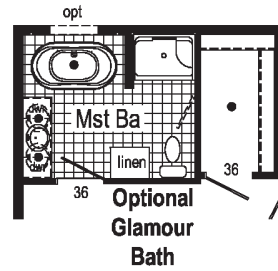
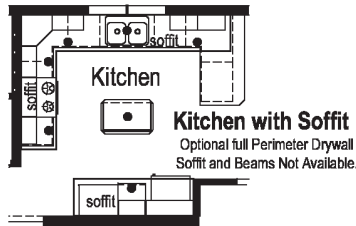
6P2003R

28x36 Approx. 1968 sq ft

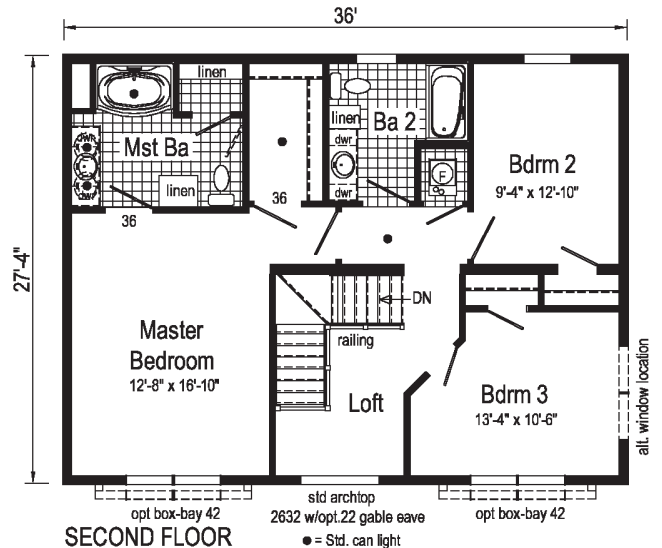
Some features shown may be optional or added on-site by others.



opt 14' bump-out w/ 22' gable eave
Optional Great Room
(omits nook)



MAIN FLOOR
Shipped on 2 carriers
R = Std. 30/36 staggered overhead
● = Std. can light



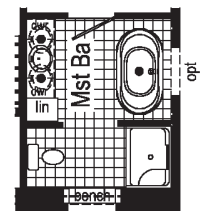
SECOND FLOOR

Harrington

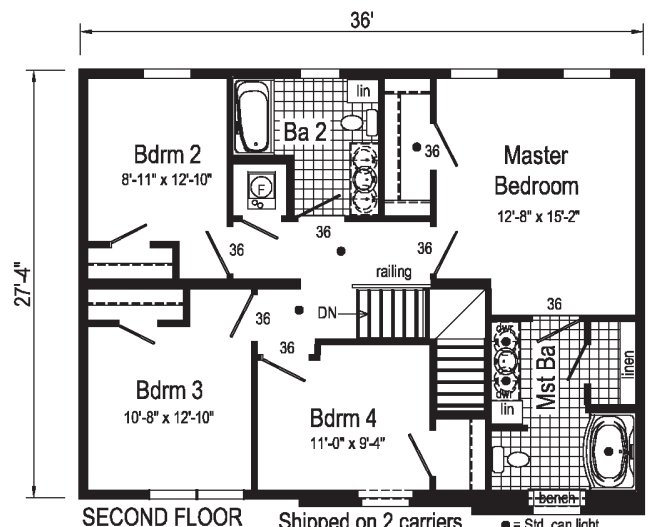
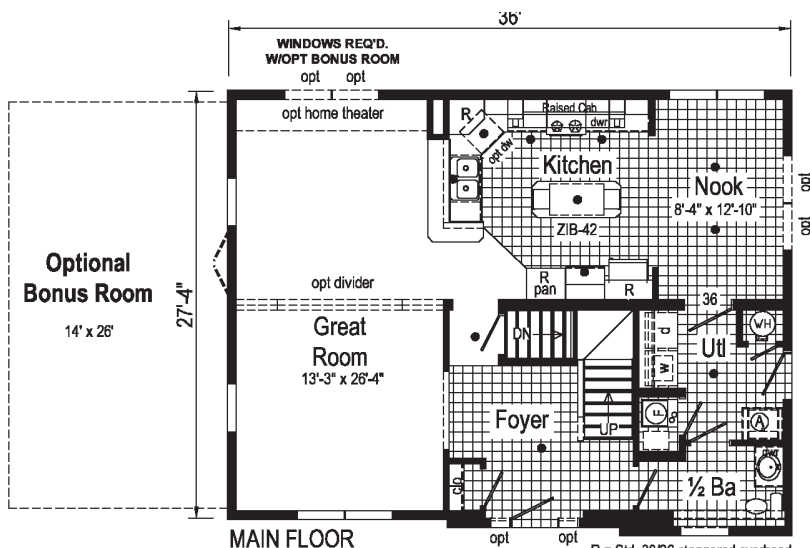
6P2004R

28x36 Approx. 2008 sq ft

Some features shown may be optional or added on-site by others.



Optional Glamour Bath



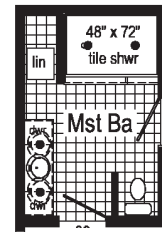


Bennington

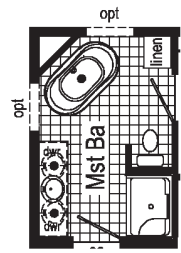
6P2005R

28x40 Approx. 2106 sq ft

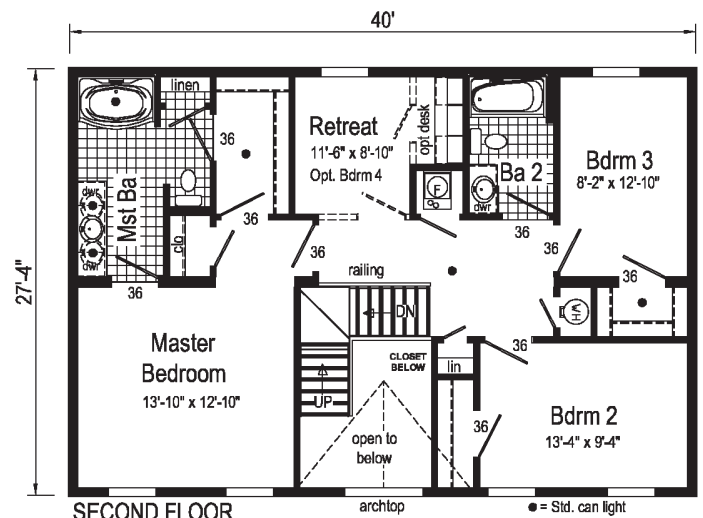
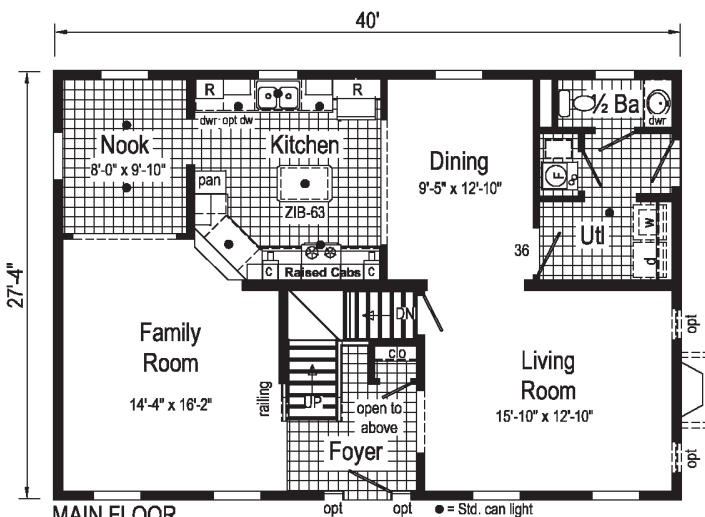
Some features shown may be optional or added on-site by others.



Optional
4'x6' Walk-In
Tile Shower



Optional Glamour
Bath



Portland

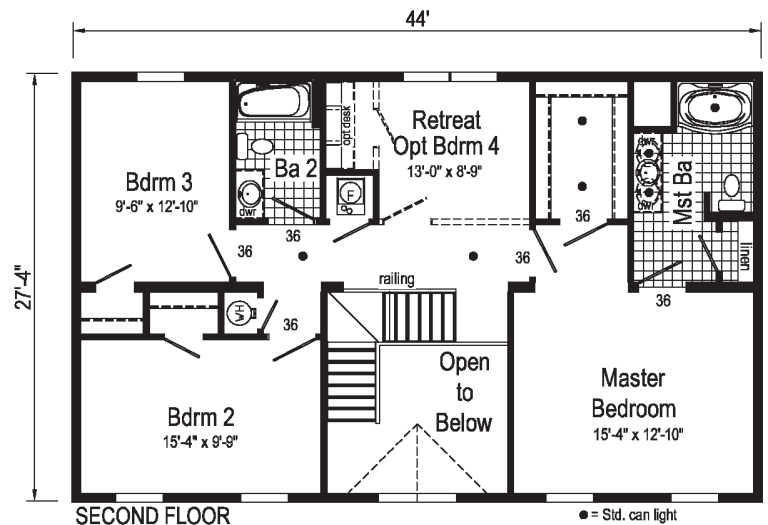
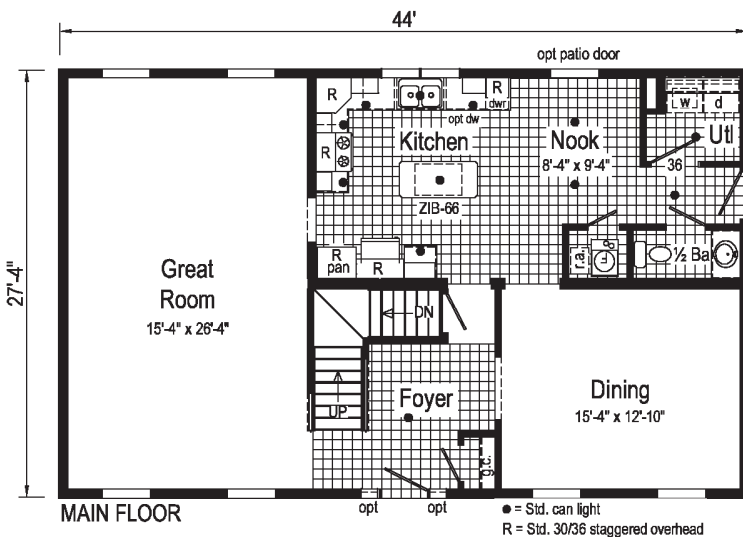
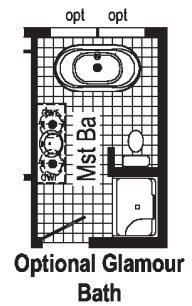
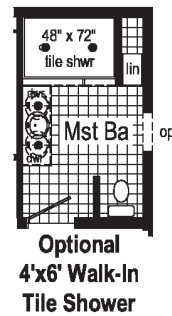
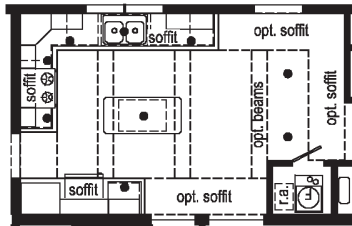
6P2006R

28x44 Approx. 2288 sq ft

Some features shown may be optional or added on-site by others.

Kitchen with Soffit

Opt. Kitchen & Nook Drywall Soffit and Beams.

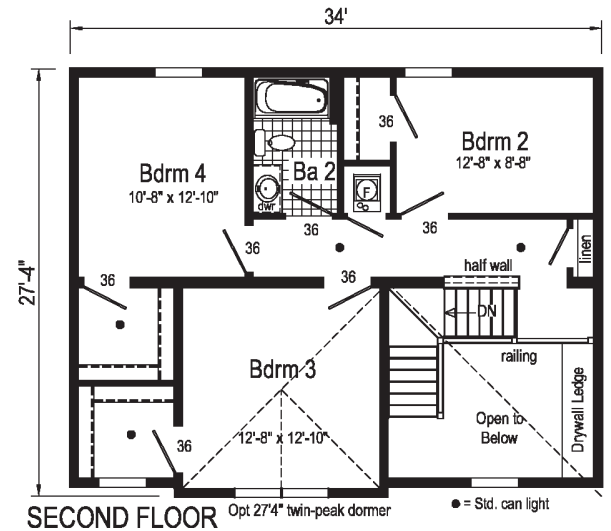
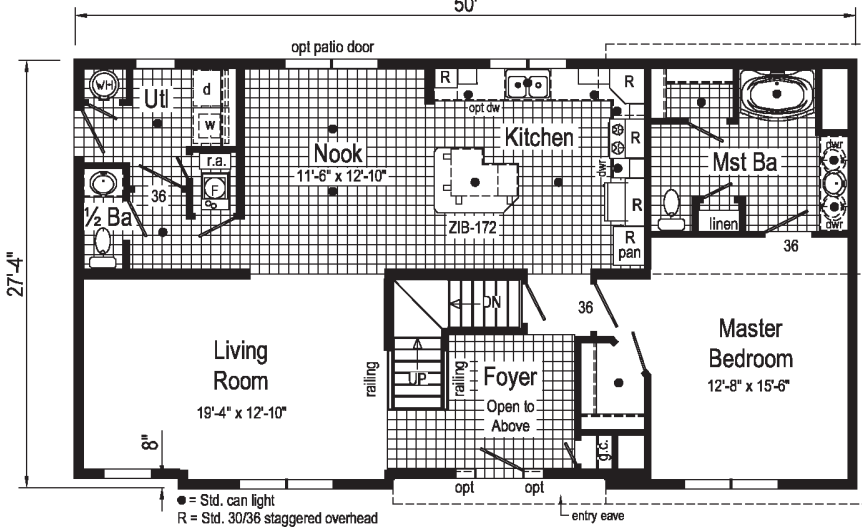
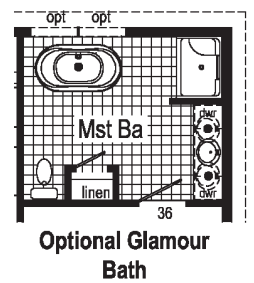
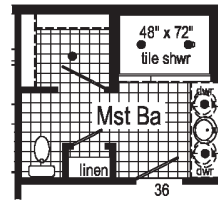
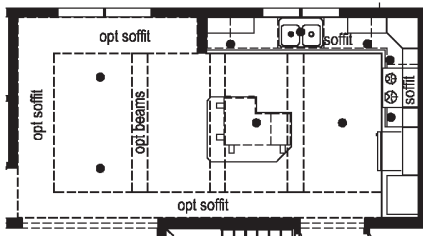


Pittsburgh

6P2007R

28x50 Approx. 2269 sq ft

Some features shown may be optional or added on-site by others.

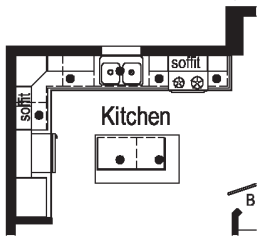


Rosedale

6P2008X

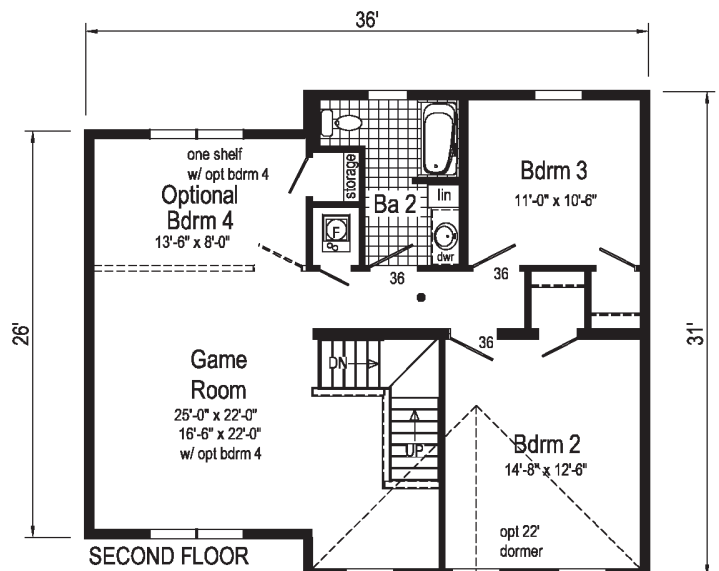
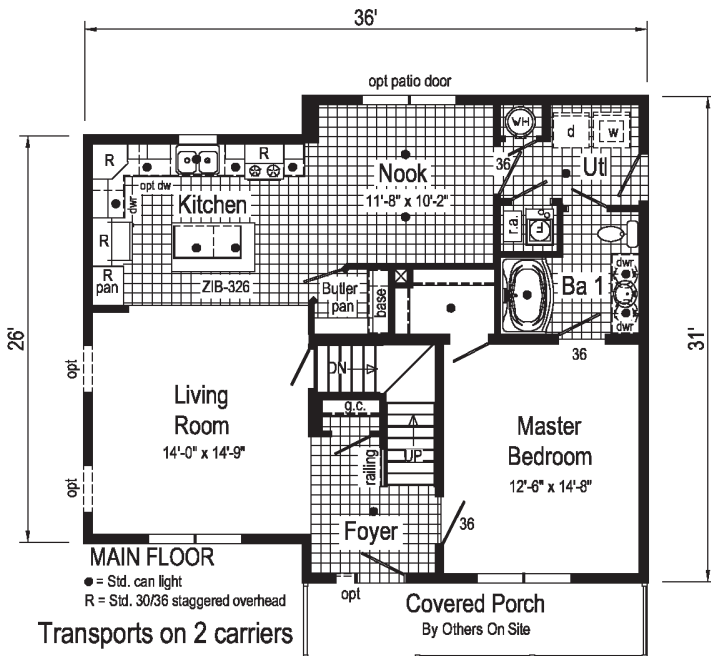
32x36 Approx. 2092 sq ft

Some features shown may be optional or added on-site by others.



Kitchen with Soffit

NOTE: optional full perimeter drywall soffit and beams not available.





Your Independent Retailer is:

Pennwest Homes
4 Pennwest Way Route 38
Emlenton, PA 16373
www.pennwesthomes.com

Connect with Us!

